

# Formulate 10' Vertical Curve - Kit 6

## FMLT-WV10-06

Formulate™ is a collection of sophisticated, ergonomically designed exhibit booths. Formulate combines state-of-the-art zipper pillowcase dye-sublimated fabric coverings with advanced lightweight aluminum structures to provide unique design, functionality, and style. The excellence of the Formulate line of displays, hanging structures and products is simply unmatched. Stretch fabric graphics are hand-sewn, durable and dry-cleanable.



## features and benefits:

- State-of-the-art 50mm aluminum tube with internal spigot connectors
- Easy to store and ship
- Quick to set up
- Supports monitor\* up to 36", max 40 lbs.
- Kit includes: one frame, one dye-sublimated pillowcase zipper graphic, one monitor mount, and one wheeled OCH2 shipping case
- Lifetime hardware warranty against manufacturer defects

## dimensions:

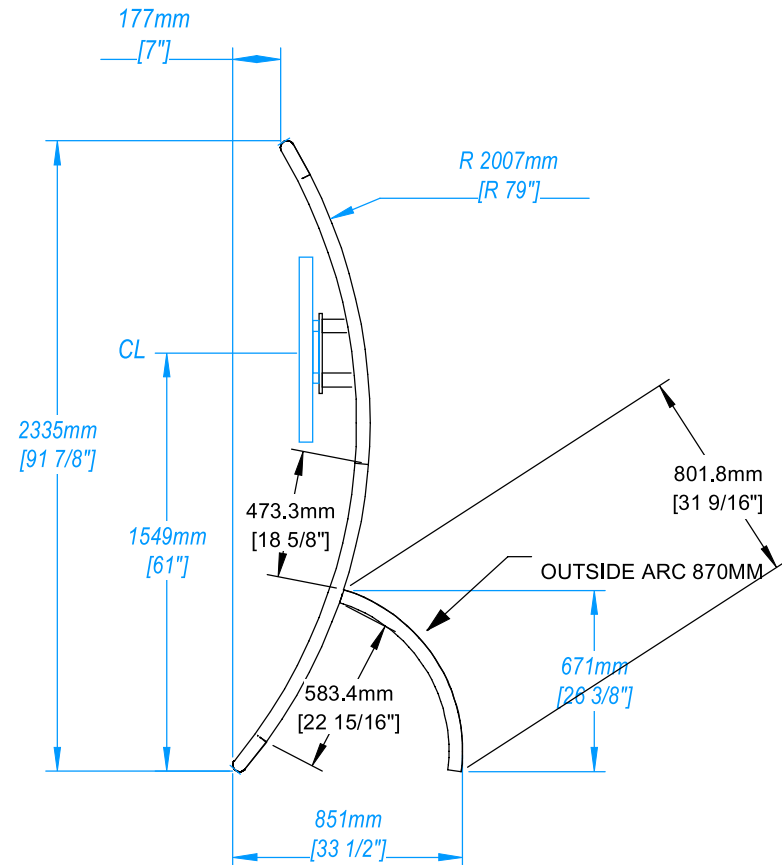
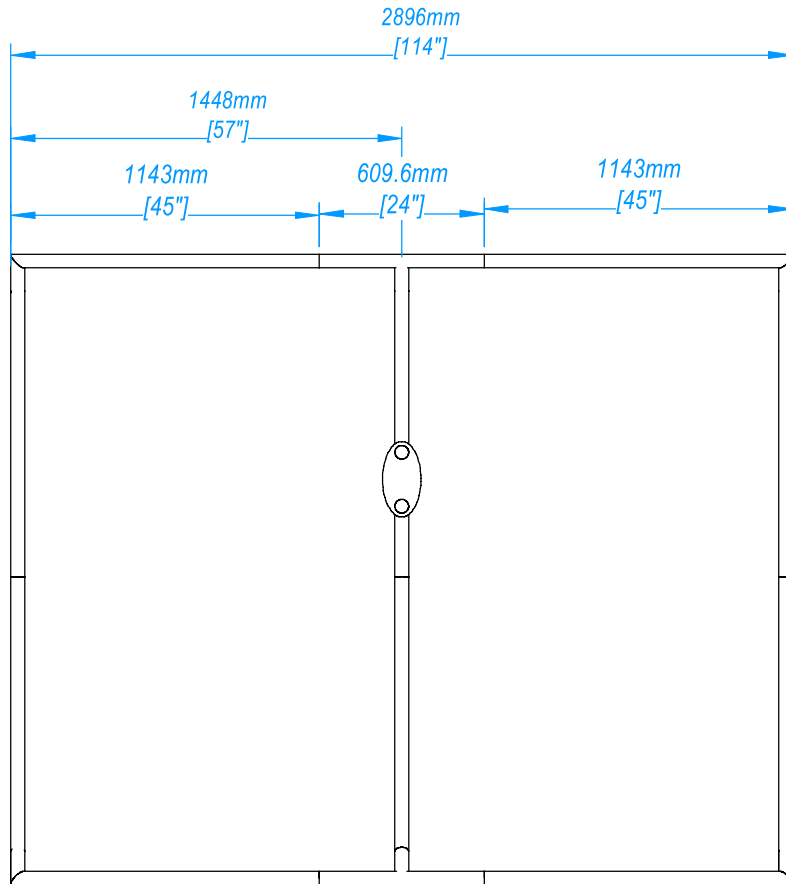
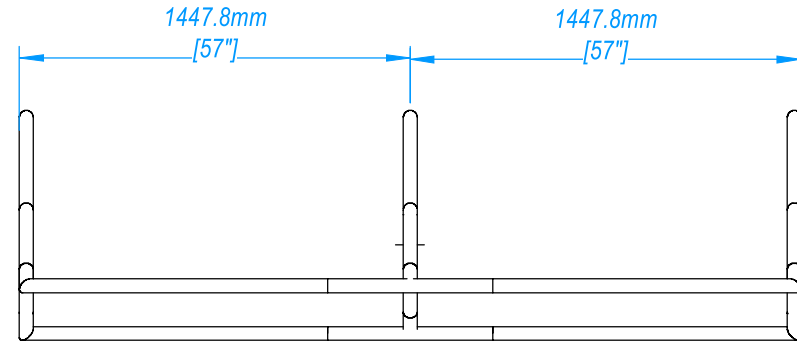
Hardware	Graphic
<p>Assembled unit: 114"w x 92"h x 33.5"d</p> <p>Approximate kit weight: 75 lbs / 34 kgs</p>	<p>Total visual area: 114"w x 97.25"h</p> <p>Please be sure to include a 2" bleed around the perimeter.</p> <p>Refer to related graphic template for more information.</p>
<p>Shipping</p> <p>Shipping dimensions: One OCH2 case: 52"l x 30"w x 15"h</p> <p>Approximate shipping weight: (kit and case) 95 lbs / 43 kgs</p>	<p>Visit: <a href="http://www.exhibitors-handbook.com/graphic-templates">www.exhibitors-handbook.com/graphic-templates</a></p>

## additional information:

<p>Graphic materials: Dye-sublimated zipper pillowcase fabric</p> <p>Optional accessories: Lumina 8-50 watt halogen lighting</p>	<p>Monitor Mount: Max T.V. Size is 36" and 40 lbs.</p> <p>*Monitor not included</p>
--	---

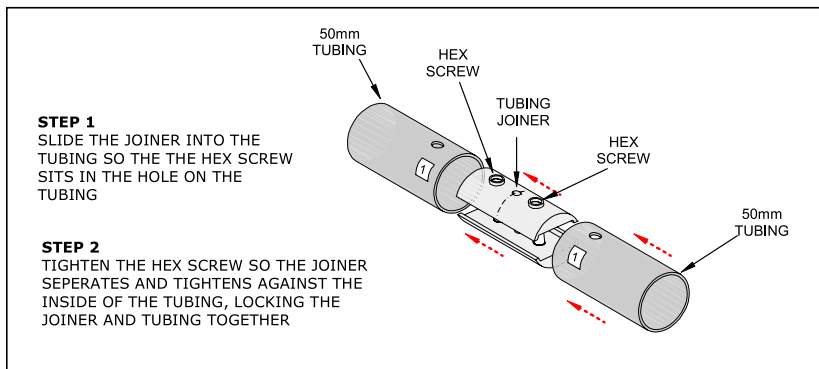
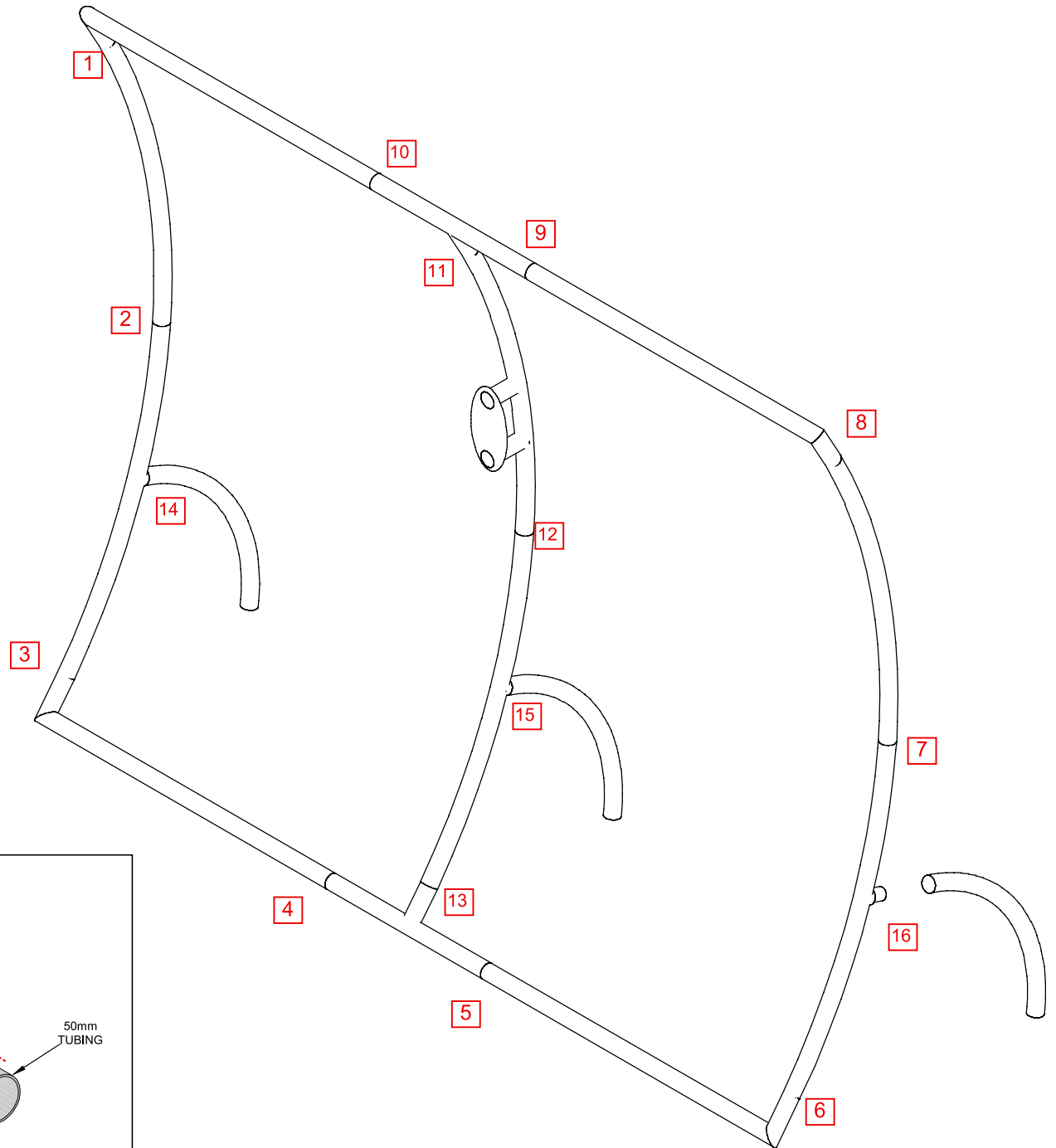
We are continually improving and modifying our product range and reserve the right to vary the specifications without prior notice. All dimensions and weights quoted are approximate and we accept no responsibility for variance. E&OE. See Graphic Templates for graphic bleed specifications.

Parts Included		
Part Label	Qty	Part Code
FABRIC GRAPHIC	x1	WV10-01-G
EXPANDING SPIGOT FOR 50MM TUBE	x13	ES50
LARGE MONITOR MOUNT	x1	OR-OPT3-B
50MM TUBE	x6	TUBE-50MM-3700-S
SNAP BUTTON FOR TUBE	x3	SNAP BUTTON 50MM



## STEP 1: ASSEMBLE FRAME

- Assemble unit by laying tubes flat on the floor. Connect the tube rails by pressing the push pin buttons in and slide over (see detailed drawing below) following the number labels listed, 1 to 1, 2 to 2 and so on.
- Apply graphic before attaching support legs (14, 15 & 16), see step 2 on next page.



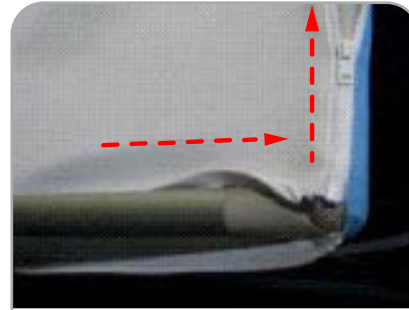
## STEP 2: ATTACH GRAPHIC



Engage both zippers on the zipper side before pulling graphic over the corner of the frame.



Pull zippered corner over left corner of the frame. DO NOT ZIP any more until over all four corners.

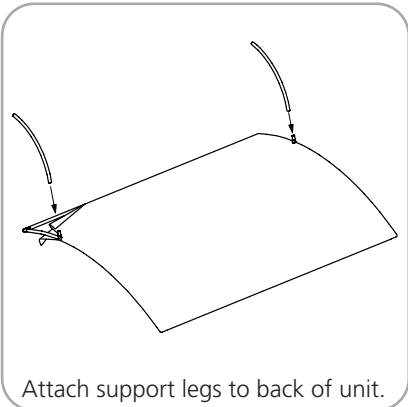


Engage zipper on right side and pull graphic over right corner of frame.



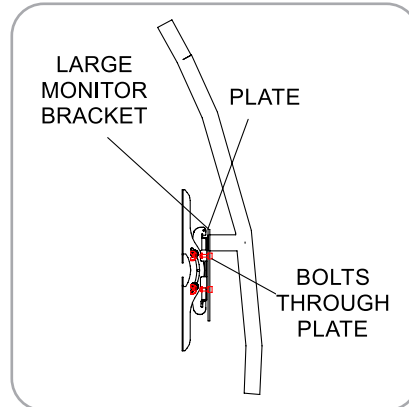
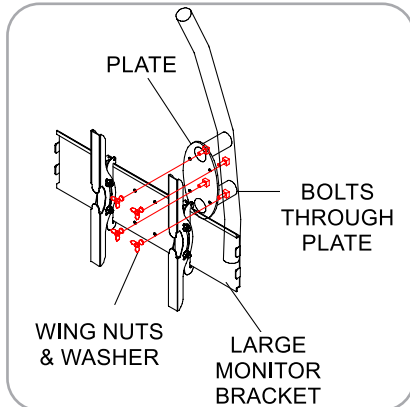
Once the graphic is over all corners, extend all zippers.

## STEP 3: ATTACH SUPPORT LEGS



Attach support legs to back of unit.

## STEP 4: ATTACH MONITOR



Unit is complete.